

2 SIERRA LANE

PORTOLA VALLEY, CA 94028

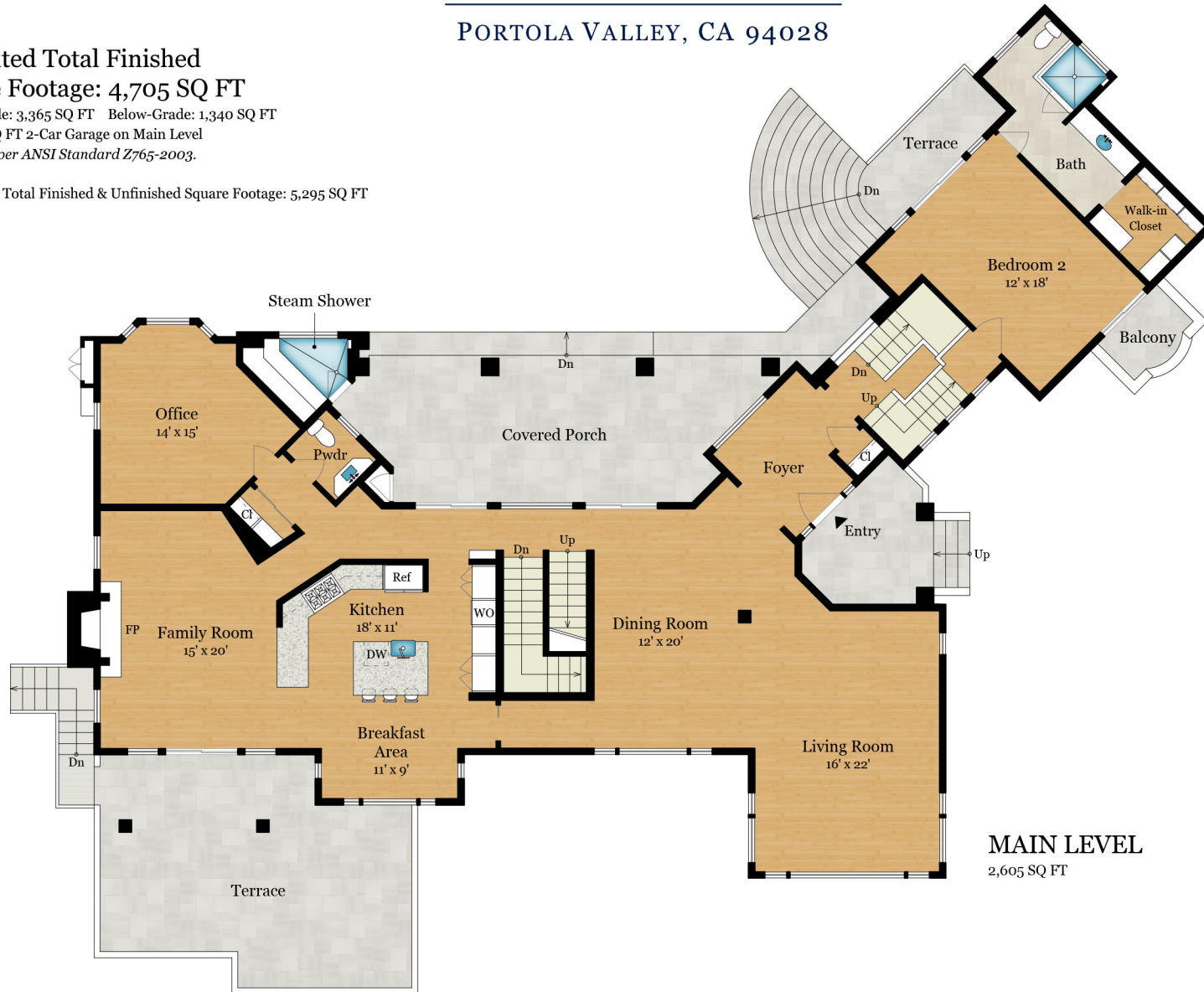
Estimated Total Finished
Square Footage: 4,705 SQ FT

Above-Grade: 3,365 SQ FT Below-Grade: 1,340 SQ FT

Plus 590 SQ FT 2-Car Garage on Main Level

Calculated per ANSI Standard Z765-2003.

* Estimated Total Finished & Unfinished Square Footage: 5,295 SQ FT



Rendering by Floor Plan Visuals.

All measurements are approximate. While deemed reliable, no information on these floor plans should be relied upon without independent verification.

Presented by Ginny Kavanaugh, Coldwell Banker Residential Brokerage

Email: gkavanaugh@camoves.com

Tel: 650.400.8076