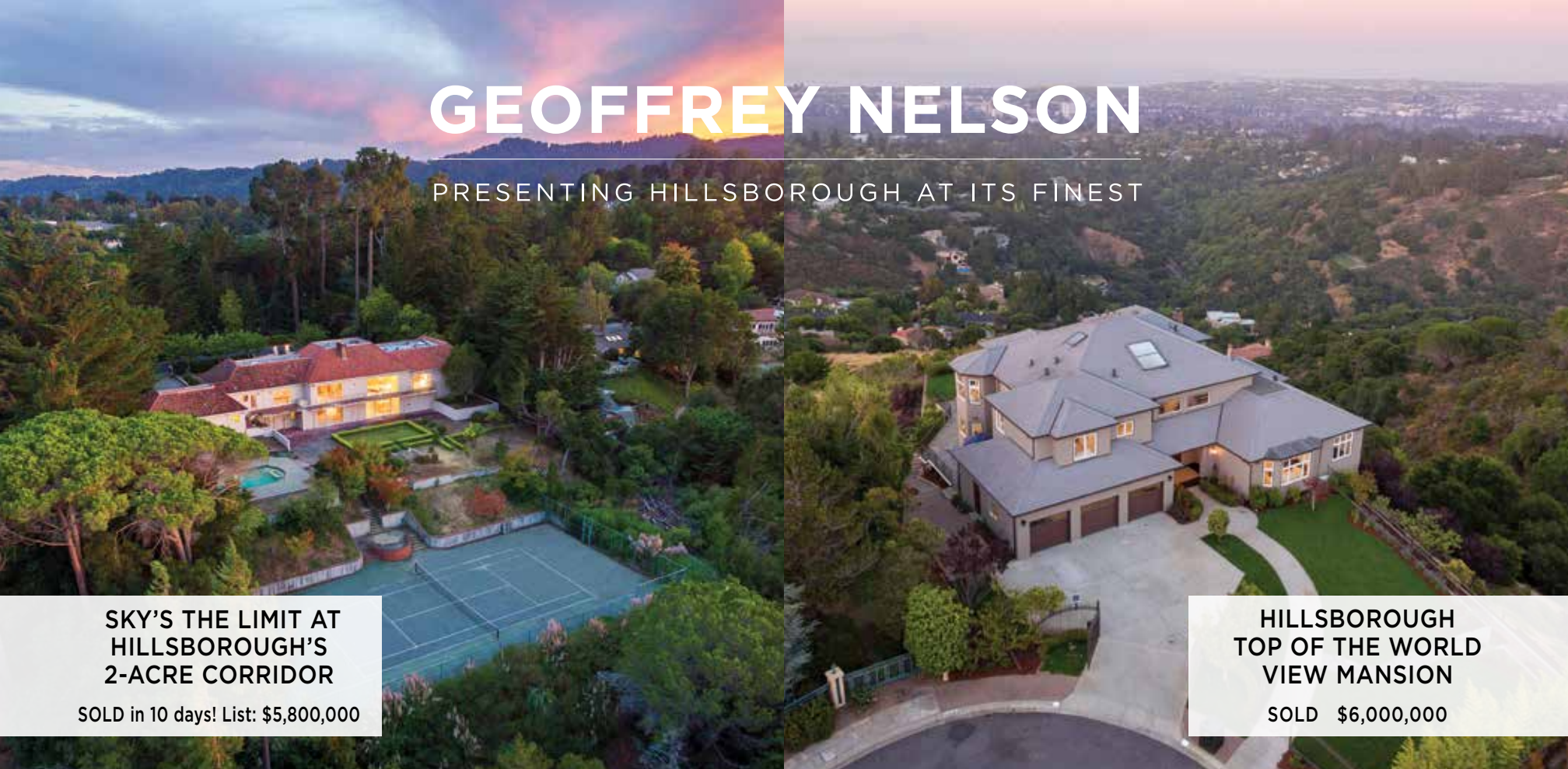


GEOFFREY NELSON

PRESENTING HILLSBOROUGH AT ITS FINEST



**SKY'S THE LIMIT AT
HILLSBOROUGH'S
2-ACRE CORRIDOR**

SOLD in 10 days! List: \$5,800,000

**HILLSBOROUGH
TOP OF THE WORLD
VIEW MANSION**

SOLD \$6,000,000

GEOFFREY NELSON MARKETS AND SELLS HILLSBOROUGH'S MOST INTERESTING HOMES.

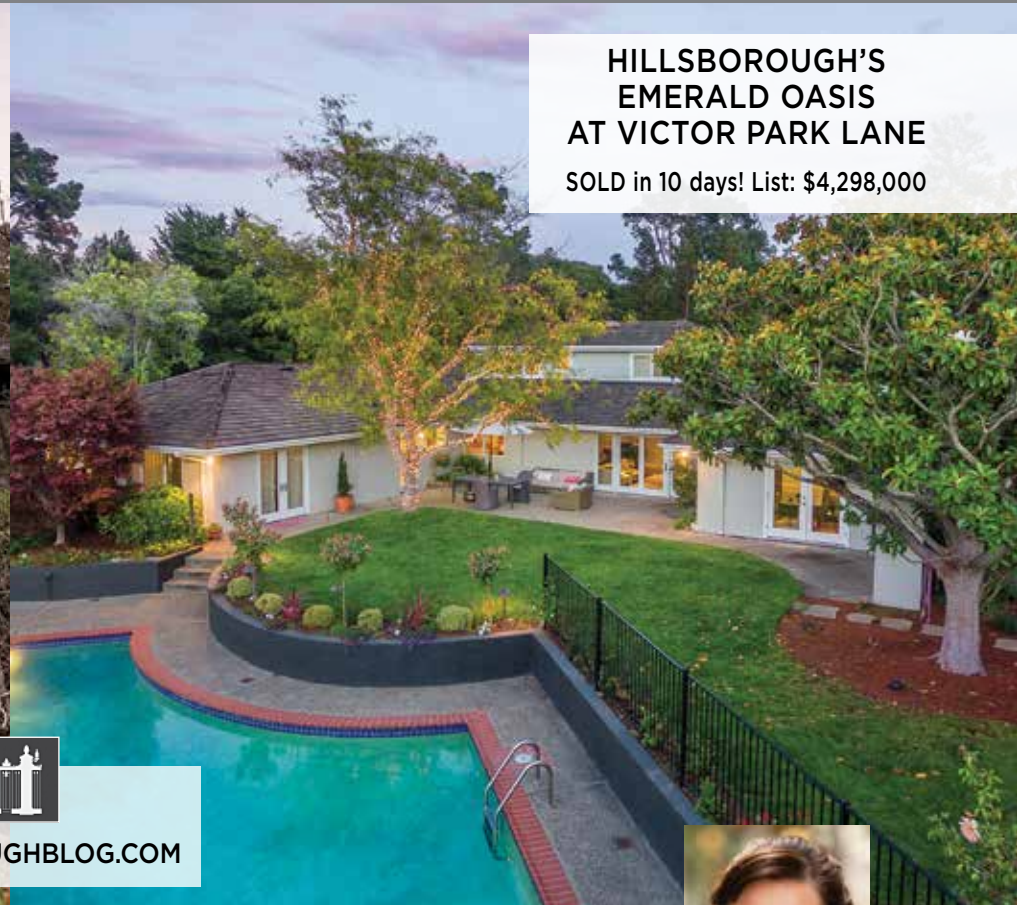
**HILLSBOROUGH'S
LE CHALET
MODERNE**

SOLD Non-MLS \$4,515,000



**HILLSBOROUGH'S
EMERALD OASIS
AT VICTOR PARK LANE**

SOLD in 10 days! List: \$4,298,000



HILLSBOROUGHBLOG.COM



Geoffrey C. Nelson

Luxury Estate Specialist

650.455.3735

HillsboroughBlog.com

geoffrey@geoffreynelson.com

License #01313666



1290 Howard Avenue, Suite 201, Burlingame CA 94010
Information deemed reliable, but not guaranteed.

Slava Polinkova-Nelson

Broker Associate

650.288.2814

Я ГОВОРЮ По-Русски

slavapolinkova@gmail.com



License #01363590